

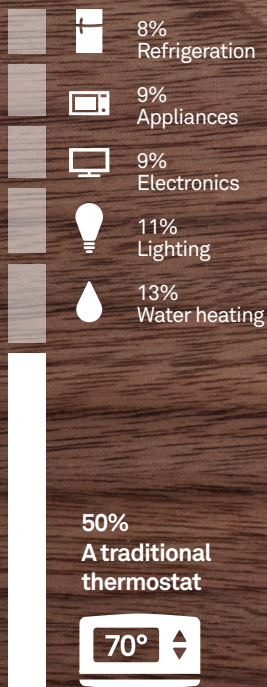
nest®

Learning Thermostat™
Keeps you comfortable.
Helps you save.



Meet Nest. The world's first Learning Thermostat.

Thermostats control about half of your home's energy. That's more than refrigerators, lighting, TVs, computers, and stereos combined.



A huge amount of that energy—and money—is wasted, mostly heating or cooling empty homes. With regular thermostats, you have to remember to turn the temperature down every time you leave. But we're human. We forget.

Programmable thermostats were supposed to help, but they're too complicated. Their inflexible schedules can't keep up with our changing lives and most people never program them to save energy. The Environmental Protection Agency even took away their Energy Star rating.

The Nest Learning Thermostat makes things simple. It programs itself and helps you save energy.

Learn more about why we made Nest at nest.com/why-we-made-it



Nest's chameleon design
blends in with any décor.



Learning to save

Just treat Nest like a regular thermostat—turn it up when you're cold, down when you're hot. Nest learns what temperatures you like in about a week and creates a custom schedule for your home. And as Nest learns, it'll turn on energy saving features.



Auto-Schedule

Nest will learn a schedule based on the temperature changes you make. So turn Nest down two nights in a row, and the next night Nest will do it for you. Nest's schedule is always adapting to you.



Auto-Away

When you're not home, Nest will notice and turn itself to an energy-saving temperature. This will help you avoid heating or cooling an empty home.



Airwave

When it's not too humid in your home, Nest will activate Airwave to save up to 30% on cooling costs.



The Nest Leaf

You'll know you're saving energy when you see the Nest Leaf. The Leaf helps guide you to energy saving temperatures.



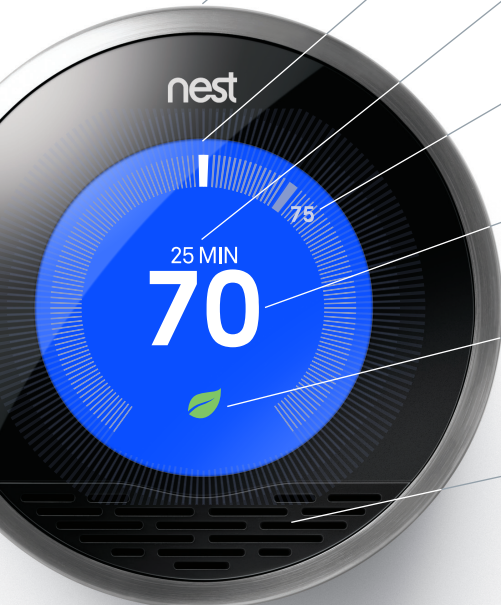
Energy History

See exactly when heating or cooling was on and what affected your energy use most. Then check your monthly Energy Report for tips to help you save more.

Learn more about how Nest saves energy at nest.com/living-with-nest

Easy to use

We designed Nest to be simple. Just turn the ring to change the temperature.



Ring

Turn it down when you're hot, up when you're cold. Press the ring for the menu.

Display

Turns blue when cooling and orange when heating.

Time-to-Temperature

Tells you how long it will take to reach your target temperature.

Current temperature

Shows the temperature in your home.

Target temperature

Displays the temperature you want to reach.

The Nest Leaf

Appears when you're saving energy.

Sensors

Nest continually measures temperature, humidity, light and activity.

Always connected

Connect the Nest Learning Thermostat to Wi-Fi to control it from your computer, smartphone or tablet.

Remote control

Use the Nest Web app or Mobile app to change the temperature, see or adjust your schedule from your computer, iPhone, iPad or Android phone.

Automatic updates

Nest downloads software updates automatically over Wi-Fi.

Energy History

Check our apps to see exactly how much energy you've used in the last 10 days.

Multiple thermostats

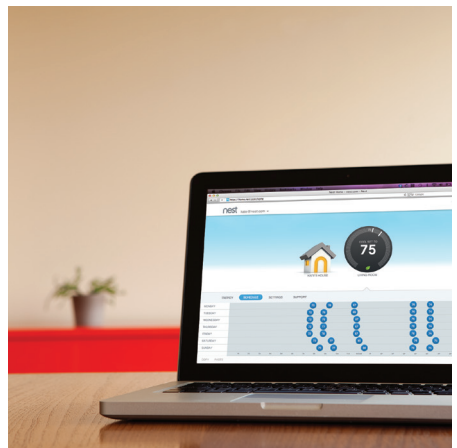
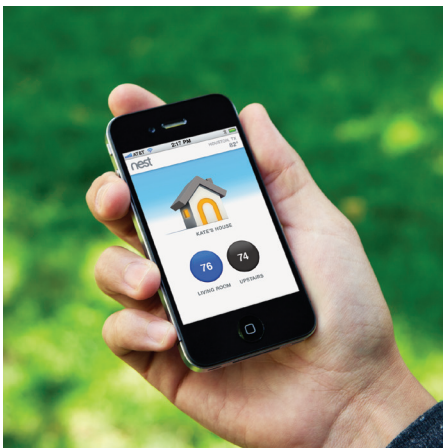
Control up to ten thermostats in two different homes with your Nest Account.

Safe and secure encryption

Nest uses public key cryptography and encryption to keep your private data safe.

Sign up for your Nest Account at nest.com/account

Download the Nest Mobile app for free from the app Store or Google Play.



Nest inside and out.

Here's the technical info for the Nest Learning Thermostat.
Find out if it will work in your home at nest.com/works

Compatibility

Nest can control:

- 24V heating & cooling
- conventional heating, one-stage or two-stage
- conventional cooling, one stage
- gas, oil, electric, solar, geothermal systems
- one-stage heat pump with auxiliary heat
- zone systems with or without dampers

Wires supported:

R, Rc, Rh, W, W1, Y, Y1, G, O/B, AUX/W2, C
Common "C" wire not needed in 99% of installations.

Wi-Fi recommended. Required for remote control.

Check compatibility at nest.com/works

Unique to Nest

- Auto-Schedule
- Auto-Away
- Airwave
- 10-day Energy History
- Monthly Energy Report
- Nest Leaf
- Time-to-Temperature
- Chameleon design
- Nest Mobile App
- Multiple Nest coordination for Auto-Away and Auto-Arrival
- Automatic system configuration
- Automatic backlight adjustment
- Built-in bubble level
- Press connectors
- Silent relays

In the box

- Nest Learning Thermostat
- Installation guide
- Start Here guide
- Nest screwdriver
- Mounting screws
- Optional mounting kit

Detailed specs

Display

- 24 bit color
- 320 pixel display
- 1.75" diameter

Sensors

- Temperature
- Humidity
- Near-field activity
- Far-field activity
- Ambient light

Wireless

- Wi-Fi-802.11 b/g/n @ 2.4 GHz
- Zigbee @ 2.4 GHz

Power

- Self-recharging design (with built-in rechargeable lithium-ion battery)
- No external power required

Environmental

- RoHS compliant
- Mercury free
- 100% recyclable packaging



Reviews and awards



reddot design award
winner 2012